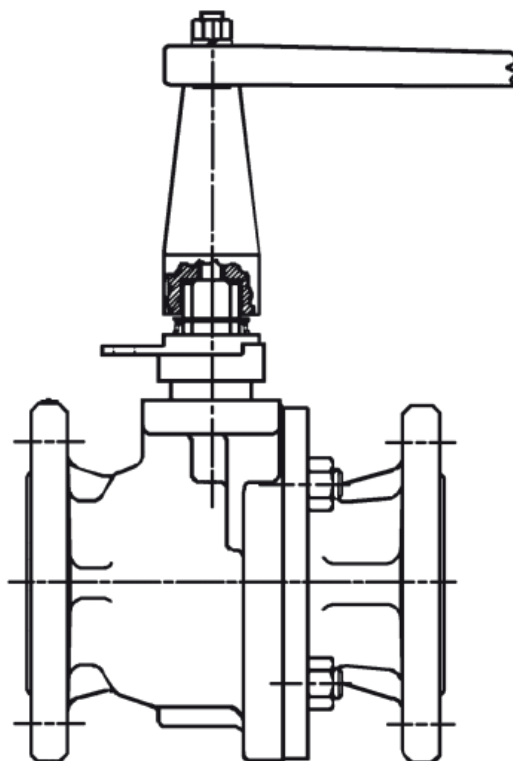


# Jamesbury stem extensions

Installation, maintenance and  
operating instructions



# Table of contents

<b>GENERAL</b>	<b>3</b>
Warning	3
Description	3
<b>INSTALLATION</b>	<b>3</b>
1/4" – 2" (DN 6 – 50) Style A Model C	3
3" – 8" (DN 80 – 200) 5000 SERIES VALVES, 2" – 6" (DN 50 – 150) 6000 SERIES VALVES & 3" (DN 80) STYLE D SCREWED END VALVES	3
<b>REPAIR KITS/ SPARE PARTS</b>	<b>6</b>

## **READ THESE INSTRUCTIONS FIRST!**

These instructions provide information about safe handling and operation of the valve.

If you require additional assistance, please contact the manufacturer or manufacturer's representative.

## **SAVE THESE INSTRUCTIONS!**

Addresses and phone numbers are printed on the back cover.

# 1. GENERAL

This instruction manual contains important information regarding the installation, operation and troubleshooting of the JAMESBURY™ Stem Extensions. Please read these instructions carefully and save them for future reference.

## 1.1 WARNING

TO PREVENT INJURY DO NOT ATTEMPT TO MOUNT A STEM EXTENSION TO A PRESSURIZED VALVE.

## 1.2 DESCRIPTION

JAMESBURY Stem Extensions are designed to manually actuate JAMESBURY valves when valve handle accessibility is difficult. These stem extensions are available in 4" (101.6 mm) lengths as standard, to accommodate varying service conditions.

VALVE	STANDARD LENGTH
1/4" – 2" (DN 6 – 50) Style A	4" (101.6 mm)
3" (DN 80) Style D	4" (101.6 mm)
3" – 8" (DN 80 – 200) Series 5000	4" (101.6 mm)
2" – 6" (DN 50 – 150) Series 6000	4" (101.6 mm)
3" – 8" (DN 80 – 200) Series 7000	4" (101.6 mm)
2" – 6" (DN 50 – 150) Series 9000	4" (101.6 mm)

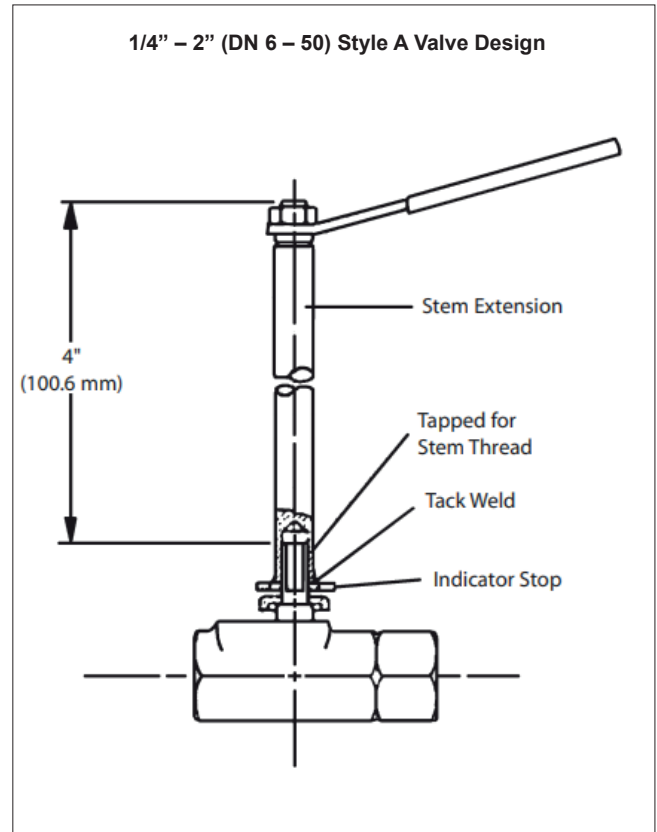


Figure 1.

# 2. INSTALLATION

## 2.1 1/4" – 2" (DN 6 – 50) STYLE A MODEL C

1. Depressurize the line. Repeat for all style valves.
2. Close the valve by rotating the handle clockwise.
3. Remove the stem nut, handle and indicator stop. Warning: Do not remove the compression plate or nuts.
4. Place the indicator stop that is furnished with the stem extension kit onto the stem.
5. Mount the handle and stem nut on the top of the stem extension.
6. Screw the stem extension onto the stem until it bottoms on the indicator stop.
7. Back off the extension (no more than a half-turn) if necessary, until the handle, which indicates the direction of the ball port, is perpendicular to the valve axis.
8. Tack weld the bottom of the stem extension to the indicator stop. (See Figure 1.)

**CAUTION:** Excessive heat may damage the stem bearing.

## 2.2 3" – 8" (DN 80 – 200) 5000 SERIES VALVES, 2" – 6" (DN 50 – 150) 6000 SERIES VALVES & 3" (DN 80) STYLE D SCREWED END VALVES

1. Close the valve by rotating the handle clockwise.
2. Remove the cap screw on top of the handle.
3. Remove the lever handle or "T" socket and pipe handle, depending on valve style. (See Figures 2 and 3).
4. Screw the longer set screw furnished with the stem extension kit into the top of the stem.
5. Screw the extension found in the kit onto the screw that is protruding from the top of the stem. Take care making sure the flats of the extension line up with the flats of the stem.
6. Slide the "T" socket down the extension and onto the stem.
7. Install the shorter set screw into the side of "T" socket to hold the "T" socket to the stem.
8. Install existing handle to the top of the extension.
9. Install washer and cap screw to lock the handle to the extension.
10. Valve handle must be parallel with pipe line when valve is in the "open" position.

3" (DN 80) – 5150/530S/5300,  
4" (DN 100) – 5150 Valves  
2" (DN 50) – 6150/6300, 3" (DN 80) – 6150 Valves

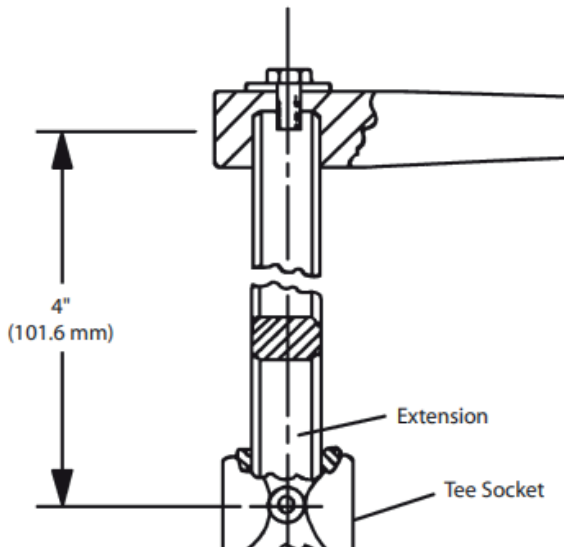


Figure 2.

4" (DN 100) – 530S/5300, 6" (DN 150) – 5150/530S/5300  
8" (DN 200) – 5150 Valves, 3" (DN 80) – 6300,  
4" (DN 100) – 6150/6300 6" (DN 150) – 6150 Valves,  
3" (DN 80) Style D Screwed End Valves

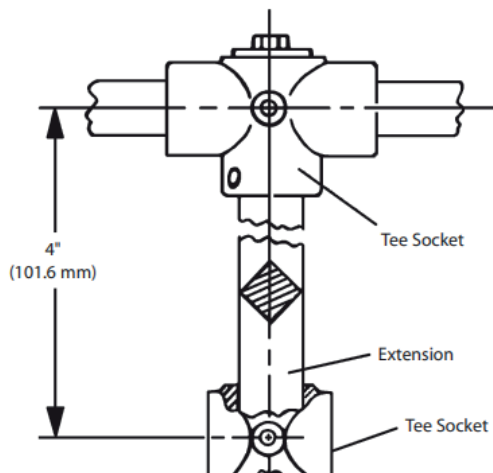


Figure 3.

22" – 6" (DN 50 – 150) 9150,  
2" – 4" (DN 50 – 100) 9300 3" – 8"  
(DN 80 – 200) 7150, 3" – 6"  
(DN 80 – 150) 7300 AND 730S, 2"  
& 2-1/2" (DN 50 & 65) SERIES 4000  
MODEL A VALVES

1. Close the valve by rotating the handle clockwise.
2. Remove the cap screw on top of the handle.
3. Remove the lever or "T" socket and pipe handle depending on the valve style. (See Figures 4 and 5).
4. Do not remove retaining ring or spring.
5. Screw the thread rod into the top of the stem to the dimension shown in (Figures 4 or 5) below. The use of a thread locking product is advised.
6. Slide the extension over the rod until it bottoms on the stem.
7. Install existing handle to the top of the extension.
8. Install washer and hex nut to the lock handle and extension to the stem.
9. Valve handle must be parallel with the pipe line when the valve is in the "open" position

2" & 3" (DN 50 & 80) Series 9300 Valves  
2" – 4" (DN 50 – 100) Series 9150 Valves  
2" – 4" (DN 50 – 100) Series 7300 Valves  
2" – 6" (DN 50 – 150) Series 7150 Valves  
2" & 2-1/2" (DN 50 & 65) Series 4000 Model A Valves

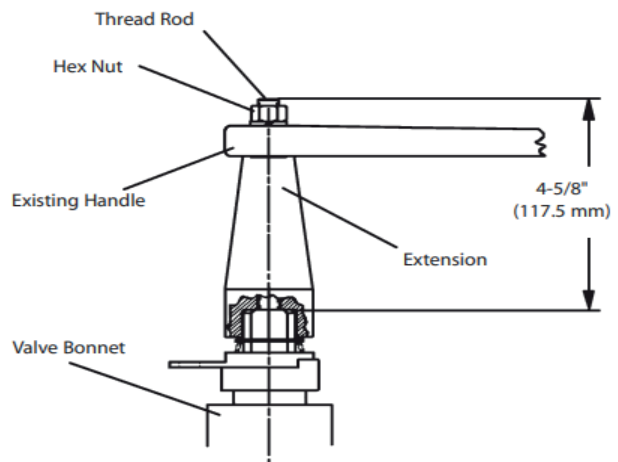


Figure 4.

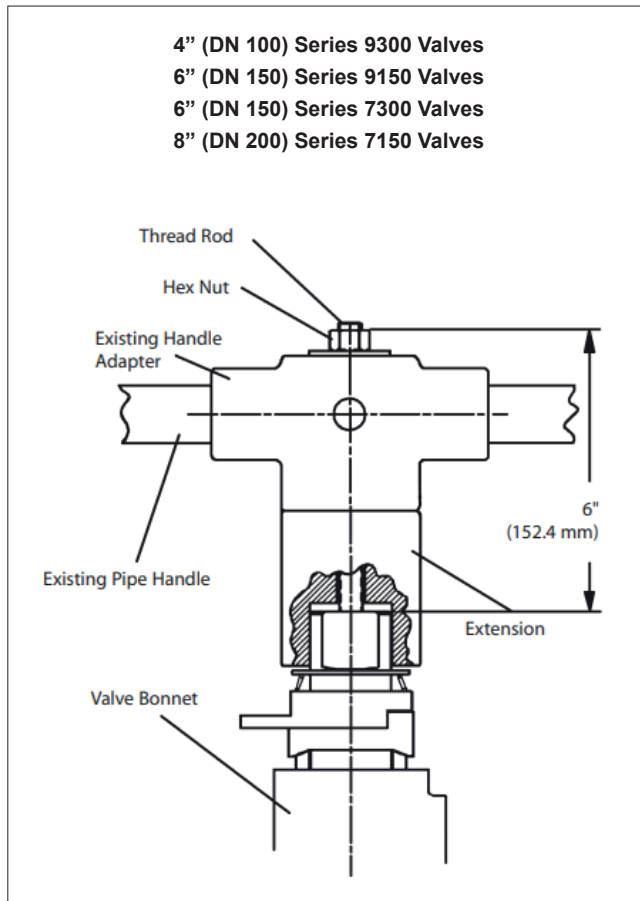


Figure 5.

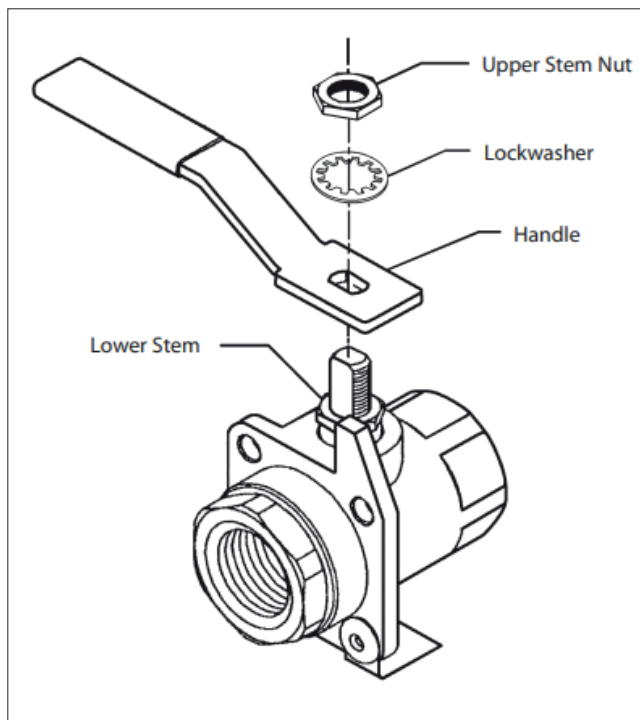


Figure 6.

1/4" – 2" (DN 6 – 50) ELIMINATOR,  
SERIES 2000, SERIES 3000  
MODEL B, SERIES 4000 MODEL  
A SERIES 5000, SERIES 6F, 3A  
& 3C, ELIMINATOR MODEL B,  
SERIES 4000 MODEL B, A STYLE  
MODEL D AND SERIES 7000 &  
9000

### DISASSEMBLY (SEE FIGURE 6)

1. Close the valve by rotating the handle clockwise.
2. Remove the upper stem nut, lockwasher and handle.

**WARNING:** Do not remove the lower stem nut.

### ASSEMBLY (SEE FIGURE 7)

1. Place the indicator stop plate (2) onto the stem, making sure that it is in the same orientation that the handle was (see Figure 8). Place the external tooth lockwasher (5) on to the stem resting on top of the indicator stop plate (2).
2. Screw the extension shaft (1) onto the stem until it is snug against the external tooth lockwasher (5). If the drilled and tapped holes for the set screws do not line up with the flats of the stem, tighten extension shaft (1) by compressing external tooth lockwasher (5) to line up holes.

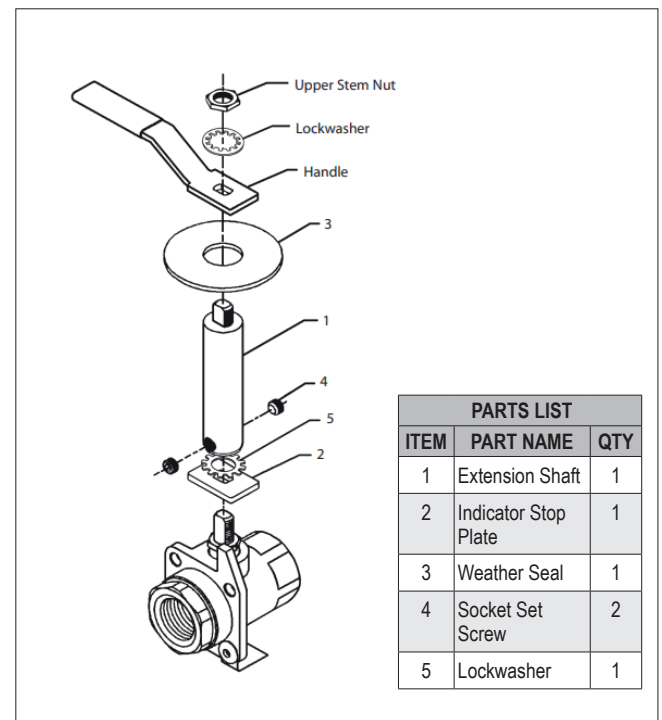


Figure 7.

3. Place a drop of Loctite® 272 or equivalent on the socket set screw threads (4). Then screw them into the threaded holes at the base of the extension shaft (1) until tight.
4. Place the weather seal (3) over the extension shaft (1) and slide it down half way.
5. Next, place the handle, tab (with tabs pointing upwards) and upper stem nut onto the top of the extension shaft (4). Tighten the upper stem nut until snug.

**NOTE:** The 4" (101.6 mm) length stem extensions for 1/4" – 2" (DN 6 – 50) Series 300, 3000, 1/2" – 2" (DN 15 – 50) Series 4000 and Series 5000 Model B valves are furnished simply as replacement parts for standard level handles, and are substituted by removing just the upper stem nut and lockwasher to permit installing the new handle.

### 3. REPAIR KITS/SPARE PARTS

For further information on spare parts and service or assistance visit our web-site at [www.metso.com/automation](http://www.metso.com/automation).

STEM EXTENSION KIT NUMBERS				
Valve Size	Std. Port	1/4" – 3/4" (DN 6 – 20)	1" & 1-1/4" (DN 25 & 30)	1-1/2" & 2" (DN 40 & 50)
	Full Port	1/2" (DN 15)	3/4" & 1-1/4" (DN 20 & 25)	1-1/4" & 1-1/2" (DN 30 & 40)
Eliminator Model A		SE-063	SE-064	SE-065
Series 2000		SE-063	SE-064	SE-065
Series 3000		SE-072	SE-073	SE-074
Series 4000 Model A		SE-066	SE-067	SE-068
Series 5000		SE-069	SE-070	SE-071
Series 6F, 3A, 3C		SE-072	SE-073	SE-074
Series 4000 Model B		SE-093	SE-094	SE-095
Eliminator Model B				
A Style Model D				
Series 7000				
Series 9000				

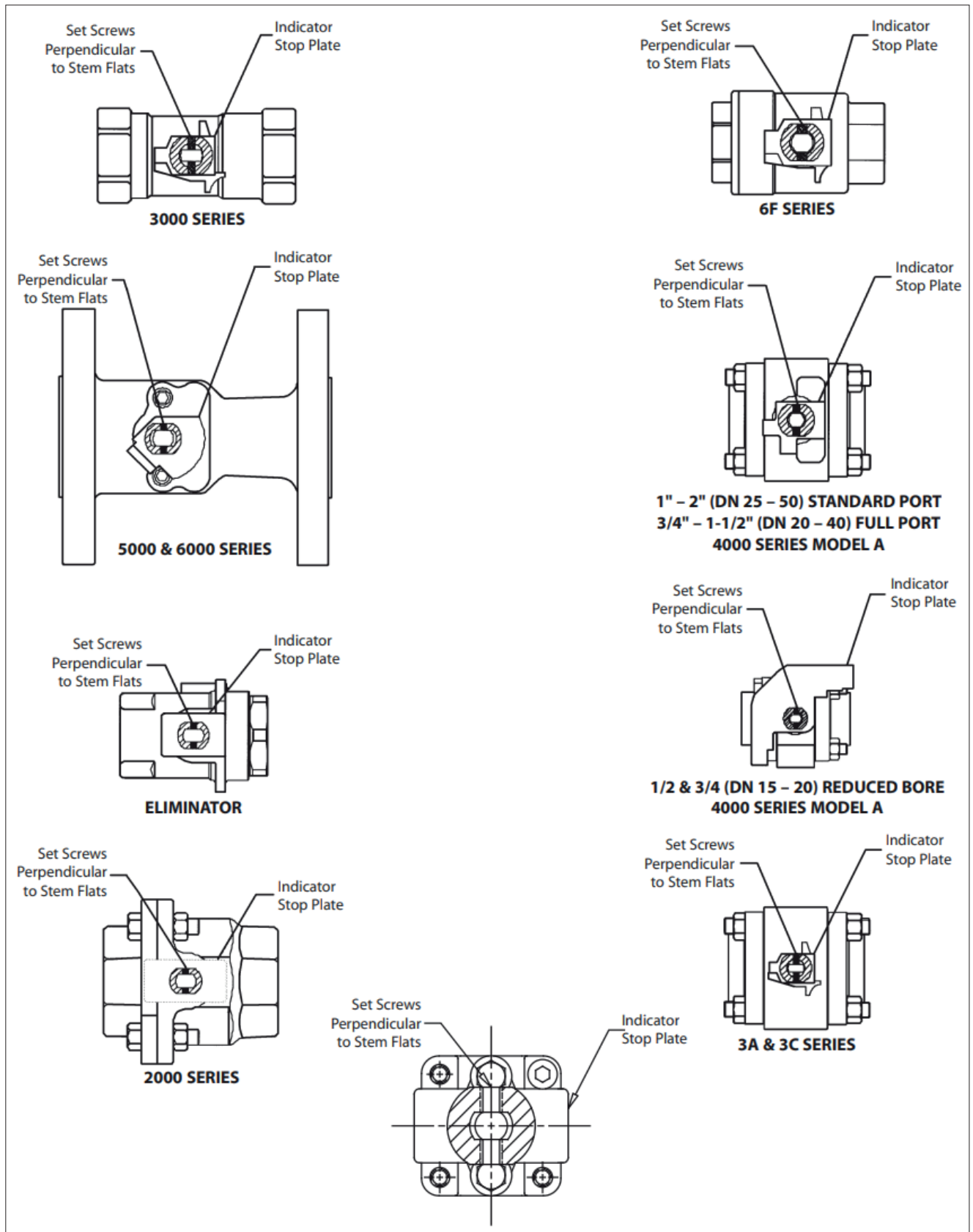


Figure 8.

**Valmet Flow Control Oy**

Vanha Porvoontie 229, 01380 Vantaa, Finland.

[flowcontrol@valmet.com](mailto:flowcontrol@valmet.com)

Tel. +358 10 417 5000.

[www.valmet.com/flowcontrol](http://www.valmet.com/flowcontrol)

Subject to change without prior notice.

Neles, Neles Easyflow, Jamesbury, Stonel, Valvcon and Flowrox, and certain other trademarks, are either registered trademarks or trademarks of Valmet Oyj or its subsidiaries in the United States and/or in other countries.

For more information [www.neles.com/trademarks](http://www.neles.com/trademarks)

