

Jamesbury™ locking stem extensions for ISO bonnet valves

Installation, maintenance and
operating instructions

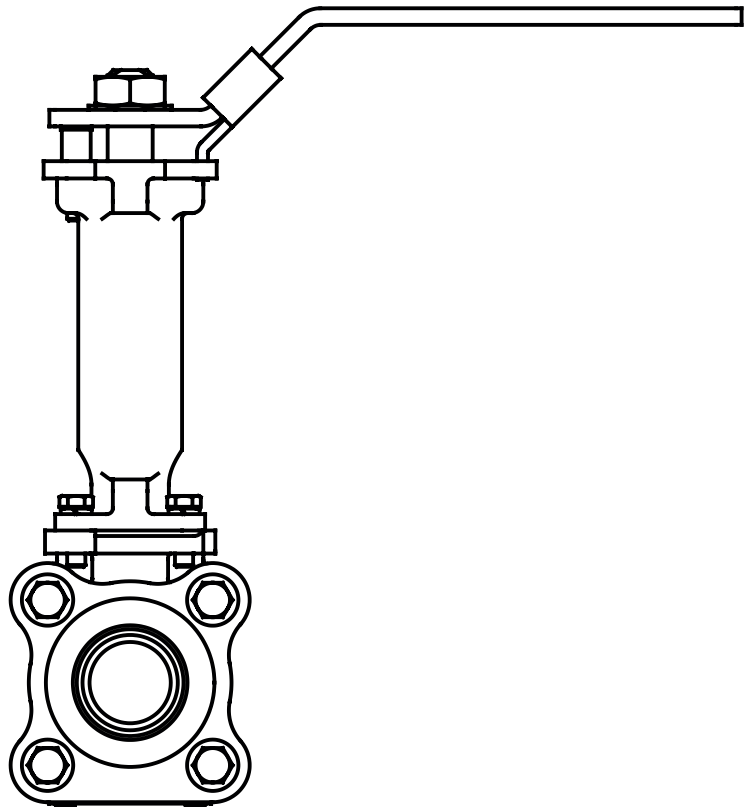


Table of contents

GENERAL	3
INSTALLATION	3
EXTENSION KITS AND OPTION PART NUMBERS	3
REPAIR KITS/ SPARE PARTS	3
EXTENSION KITS AND OPTION PART NUMBERS	4
REPAIR KITS/ SPARE PARTS	4

READ THESE INSTRUCTIONS FIRST!

These instructions provide information about safe handling and operation of the valve.

If you require additional assistance, please contact the manufacturer or manufacturer's representative.

SAVE THESE INSTRUCTIONS!

Addresses and phone numbers are printed on the back cover.

1. GENERAL

This instruction manual contains important information regarding the installation, operation and troubleshooting of the JAMESBURY™ Locking Stem Extensions for ISO Bonnet Valves. Please read these instructions carefully and save them for future reference.

2. INSTALLATION

1. Depressurize the line.
2. Fully close the valve by rotating the handle clockwise.
3. Remove the indicator stop and socket head cap screw from the valve bonnet.
4. Remove the stem nut, lockwasher and handle from the valve. Retain the handle and lockwasher for use with the extension.

WARNING:

DO NOT REMOVE THE GLAND COMPRESSION PLATE OR THE GLAND SCREWS.

5. Install the bearing on the extension shaft, as shown (in **Figure 1**), and insert the shaft, bearing end first, into the extension housing.
6. Fit the extension assembly over the stem so that the blade fits into the extension shaft.
7. Align the mounting holes on the extension housing with the mounting flange on the valve, making sure to maintain access to the gland screws.
8. Mount the extension assembly to the valve with the screws provided.
9. Install the indicator stop on the top flange of the extension as shown (in **Figure 2**), with the new socket head cap screw, lockwasher and nut provided.
10. Install the handle using the new lockwasher provided and existing stem nut.

CAUTION:

EXCESSIVE HEAT MAY DAMAGE THE NON-METALLIC STEM BEARING.

3. EXTENSION KITS AND OPTION PART NUMBERS

See Accessory tables below for specifics.

4. REPAIR KITS/SPARE PARTS

For further information on spare parts and service or assistance visit our web-site at www.neles.com.

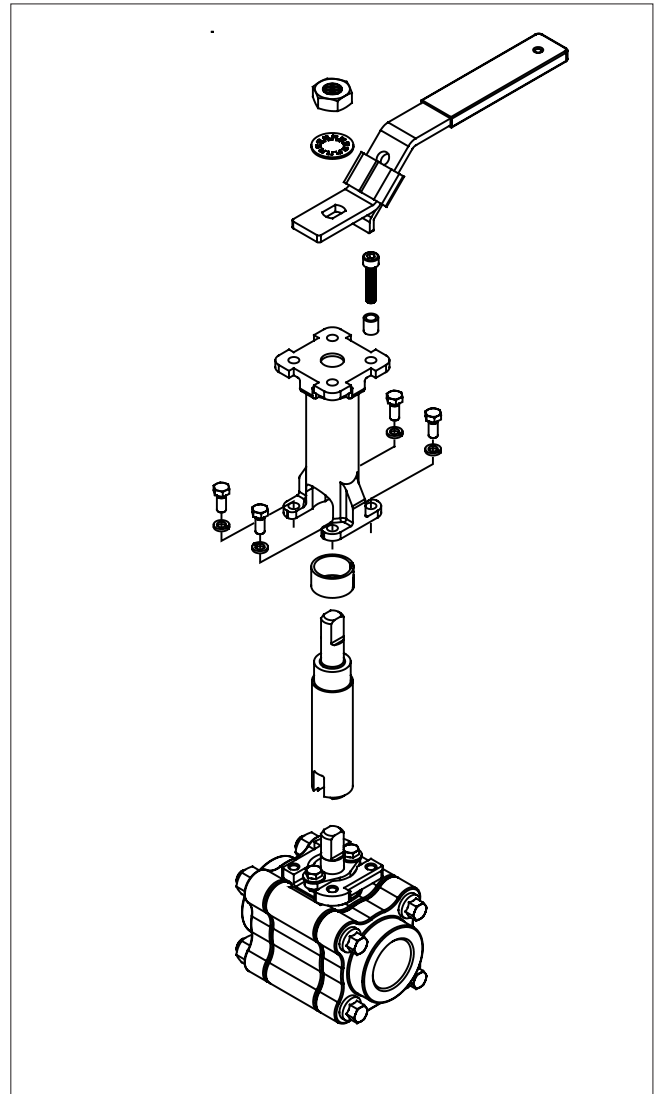


Figure 1.

1. Mount the extension assembly to the valve with the screws provided.
2. Install the indicator stop on the top flange of the extension as shown (in **Figure 2**), with the new socket head cap screw provided.
3. Install the handle using the new lockwasher provided and existing stem nut.

CAUTION:

EXCESSIVE HEAT MAY DAMAGE THE NON-METALLIC STEM BEARING.

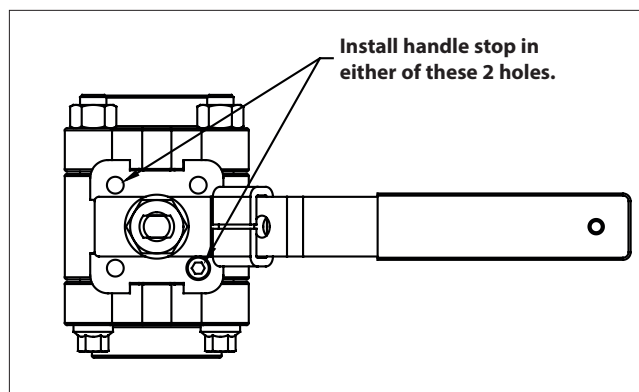


Figure 2.

5. EXTENSION KITS AND OPTION PART NUMBERS

See Accessory tables below for specifics.

6. REPAIR KITS/SPARE PARTS

For further information on spare parts and service or assistance visit our web-site at www.neles.com.

Accessories Table - inches								
Valve Size*		Stem Extension	Locking Oval	Round	Round/Oval Handle		Allowable Max.Torque FT•LBS	
Standard Bore	Full Bore				Dimension A	Dimension H	Round	Oval
1/2"	1/2"	SE-096	112-0108-30	112-0105-30	4.00	3.50	9	9
3/4"	—	SE-096	112-0108-30	112-0105-30	4.00	3.65	9	9
1"	3/4"	SE-097	112-0109-30	112-0106-30	4.50	4.12	18	18
1-1/4"	1"	SE-097	112-0109-30	112-0106-30	4.50	4.25	18	18
1-1/2"	1-1/4"	SE-098	112-0110-30	112-0107-30	5.75	4.92	25	25
2"	1-1/2"	SE-098	112-0110-30	112-0107-30	5.75	5.10	25	25
2-1/2"	2"	—	—	—	—	—	—	—

Accessories Table - DN/mm								
Valve Size*		Stem Extension	Locking Oval	Round	Round/Oval Handle		Allowable Max.Torque N•m	
Standard Bore	Full Bore				Dimension A	Dimension H	Round	Oval
15	15	SE-096	112-0108-30	112-0105-30	101.6	88.9	14	14
20	—	SE-096	112-0108-30	112-0105-30	101.6	92.7	14	14
25	20	SE-097	112-0109-30	112-0106-30	114.3	104.6	25	25
32	25	SE-097	112-0109-30	112-0106-30	114.3	108.0	25	25
40	32	SE-098	112-0110-30	112-0107-30	146.0	125.0	34	34
50	40	SE-098	112-0110-30	112-0107-30	146.0	129.5	34	34
65	50	—	—	—	—	—	—	—

Subject to change without prior notice.

Neles, Neles Easyflow, Jamesbury, Stonel, Valcon and Flowrox, and certain other trademarks, are either registered trademarks or trademarks of Valmet Oyj or its subsidiaries in the United States and/or in other countries.

For more information www.neles.com/trademarks

Valmet Flow Control Oy

Vanha Porvoontie 229, 01380 Vantaa, Finland.

flowcontrol@valmet.com

Tel. +358 10 417 5000.

www.valmet.com/flowcontrol

